

SAILING INSTRUCTIONS

77th Annual One Design Regatta
August 13-14, 2016
Fishing Bay Yacht Club
Deltaville, Virginia



1 RULES

- 1.1 The regatta will be governed by the rules as defined in The Racing Rules of Sailing.
- 1.2 If there are any discrepancies between the Notice of Race and the Sailing Instructions, the Sailing Instructions take precedent.
- 1.3 Competitors in the Portsmouth class must fly a red streamer at the aft end of the vessel's boom. (Provided at check in)

2 NOTICES TO COMPETITORS

- 2.1 Notices to competitors will be posted on the Official Regatta Notice Board located in front (landside) of FBYC Main Clubhouse.
- 2.2 Any change to the sailing instructions will be posted before 0900 on the day it will take effect, except that any change to the schedule of races will be posted by 1900 on the day before it will take effect.

3 Signals Made Ashore

- 3.1 Signals made ashore will be displayed on the flagpole on the Fishing Bay dock.
- 3.2 When flag AP is displayed ashore, '1 minute' is replaced with 'no less than 45 minutes' in the race signal AP.
- 3.3 Signals made ashore shall be for all classes and courses.

4 SCHEDULE

4.1

Friday, August 12, 2016

Late Registration & Check in 1700 – 2000

Saturday, August 13, 2016

Continental Breakfast 0800
Check-In 0800 - 0925
Skippers Meeting 0930
First Warning Signal 1100
Followed by subsequent races
Post Race Bar 1700
Buffet Dinner 1800

Sunday, August 14, 2016

Continental Breakfast 0800
First Warning Signal 1000
Followed by subsequent races
No races started after 1400
Followed by refreshments and awards

4.2 No races shall be started after 1400 on Sunday.

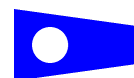
5 CLASS FLAGS

5.1 Class flags will be:

Flying Scot

FS

Laser Radial



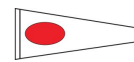
(Code Flag 2)

**Portsmouth
Handicap Fleet**



(Code Flag 9)

Laser Standard



(Code Flag 1)

Optimist

Q

6 RACING AREAS

6.1 Appendix A shows the location of racing areas.

7 THE COURSES

7.1 Sample course diagrams shown in Appendix B show the approximate angles between the legs, the order in which marks are to be rounded or passed and the side on which each mark is to be left.

7.2 The course for each class will be designated by displaying the appropriate letter(s) on the Race Committee Signal Boat. The number following the course designation will indicate the number of legs.

7.3 For Courses H & HL - where the start and finish lines are in the middle of a windward leg, boats may not cross through either a starting line nor a finishing line. ("Gate is Closed")

8 MARKS

8.1 Marks for all classes will be orange inflatable marks.

8.2 New Marks, as provided in rule 33, will be yellow inflatable marks.

8.3 The starting and finishing marks will be orange inflatable marks.

9 THE START

9.1 Races will be started by using rule 26 with the warning signal made 5 minutes before the starting signal for all classes except Optimist Green.

9.2 Optimist Green races will be started using the RRS Appendix S - Sound Signal Starting System.

9.3 The starting line will be between an orange flag on the committee boat at the starboard end and an orange mark on the port end.

9.4 Boats whose warning signal has not been made shall avoid the starting area during the starting sequence for other races.

9.5 A boat starting later than 4 minutes after her starting signal will be scored Did Not Start without a hearing. This changes rule A4.

9.6 If flag U has been displayed as the preparatory signal, no part of a boat's hull, crew, or equipment shall be in the triangle formed by the ends of the starting line and the first mark during the last minute before her starting signal. If a boat breaks this rule and is identified, she shall be disqualified without a hearing but not if the race is restarted or resailed or postponed or abandoned before the starting signal. This changes rule 26.

9.7 Race committee will attempt to hail OCS boats by sail number on individual recalls. Failure of the race committee to make this hail, failure of a boat to hear the hail, her position in the sequence of notifications or promptness of notification will not be valid grounds for redress. This modifies RRS 29.1.

10 THE FINISH

10.1 The finishing line will be between a staff displaying an orange flag on a race committee boat and the course side of an orange inflatable finishing mark, or a staff displaying an orange flag on another race committee boat.

11 TIME LIMITS

11.1 The time limit for the first class boat to finish will be 90 minutes.

11.2 Boats failing to finish within 30 minutes after the first boat in class finishes will be scored TLE and given points 1 greater than the number of boats finishing the race. This changes rules 35, A4.2 and A5.

12 PROTESTS AND REQUESTS FOR REDRESS

12.1 Protest forms are available at the race office inside the first floor of the main clubhouse. Protests and requests for redress or reopening shall be delivered there within the appropriate time limit.

12.2 The protest time limit will begin when the race committee signal boat for each course docks and ends 1 hour later. The protest time limit for each course will be posted on the regatta notice board.

12.3 A notice of protests files and approximate hearing times will be posted on the Regatta Notice Board within 20 minutes after the expiration of the Protest Time Limit. This posting shall constitute the notice required for Race Committee or Protest Committee protests required under RRS 61.1(b).

13 SCORING

13.1 The Low-Point Scoring System RRS A4 will apply except that each skipper's total score will be the sum of his/her scores for all races (no throw outs). This changes RRS A2.

13.2 Post-race penalties will be available as per Appendix T, Section B, however Section b penalties are changed as follows:

- a. The penalty under T2.2(a) will be 30% (Penalty accepted prior to the end of Protest Time Limit)
- b. The penalty under T2.2(b) will be 40% (Penalty accepted after end of Protest Time Limit)

This changes RRS Appendix T2.2.

13.3 Alternative Penalty Acknowledgement Forms will be available at the Race Office desk.

13.4 Classes racing under the Portsmouth Handicap will be scored as a fleet and not their respective class.

13.5 One completed race constitutes a regatta.

14 SAFETY

14.1 A yacht requesting assistance should attempt to signal by a crew member waiving an extended arm. A yacht may also contact the Race Committee on VHF channel 72.

14.2 Each boat shall carry a tow line of appropriate diameter and length for the class of boat.

14.3 Boats disabled or unable to return to the dock under their own sails may be towed to a green inflatable mark astern of the signal boat and will ask to tie off/anchor there until a break in the racing permits a safety or RC boat to tow the boat to dock.

15 AWARDS

15.1 The John R. Hawsworth Memorial Trophy will be awarded to the class winner who has been most competitive as measured both by the degree to which he has consistently been at the top of his class and the number of boats against which he has competed.

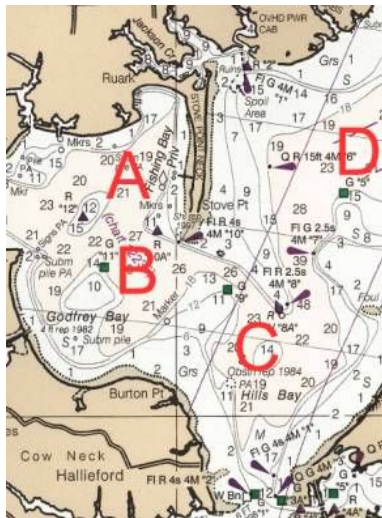
15.2 Awards shall be given as follows:

- Flying Scots 1-5
- Laser Standard 1-3
- Laser Radial 1-3
- Portsmouth 1-3
- Optimist Overall 1-5
- Optimist Red Subdivision 1-3
- Optimist Blue Subdivision 1-3
- Optimist White Subdivision 1-3
- Optimist Green - All competitors

16 DISCLAIMER OF LIABILITY

16.1 Competitors participate in the regatta entirely at their own risk. See Rule 4, Decision to Race. The organizing authority will not accept any liability for material damage or personal injury or death sustained in conjunction with or prior to, during or after the regatta.

APPENDIX A



APPENDIX B

<p>H</p> <p>H3 = S-2-3-F H5 = S-2-3-2-3-F</p>	<p>HL</p> <p>HL3 = S-1-3-F HL5 = S-1-3-1-3-F</p>	<p>L</p> <p>L3 = S-1-3-F L5 = S-1-3-1-3-F</p>
<p>W</p> <p>W3 = S-2-3-F W5 = S-2-3-2-3-F</p>	<p>WS <small>(WS4 Shown)</small></p> <p>WS2 = S-2-F WS4 = S-2-3-2-F</p>	<p>LS <small>(LS4 Shown)</small></p> <p>LS2 = S-1-F LS4 = S-1-3-1-F</p>
<p>OW</p> <p>OW3 = S-1-2-F OW5 = S-1-2-1-2-F</p>	<p>OH</p> <p>OH3 = S-1-2-F OH5 = S-1-2-1-2-F</p>	